

HWD1280PXB1

12kg + 8kg 600 Series Combi Front Loader Washer Dryer



HWD1280PXB1

Haier

Height

850mm

Width

595mm

Depth

678mm

Weight (Packaged)

92kg

Weight (Product)

86kg

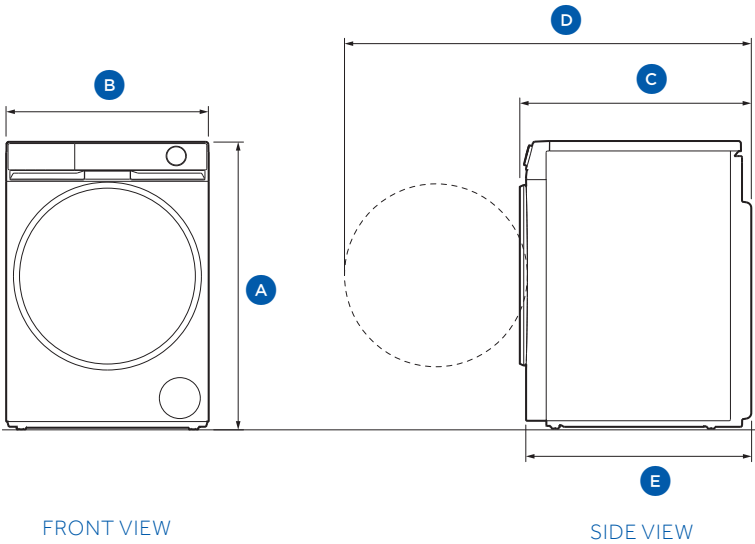
FEATURES

- Wash and dry in one appliance for everyday convenience and fabric care
- 12kg wash and 8kg dry capacity suits larger households and family laundry needs
- Direct Motion Motor runs quieter and smoother while using less energy
- Advanced Stain Treatment works harder to lift a wider range of stains for a thorough clean
- Woolmark Black certified wash cycle gently cares for delicate wool fabrics
- Dual spray nozzles rinse away foam and residue to keep washer fresh
- Auto Dose dispenses the right detergent each load, reducing waste and improving results
- Steam Refresh smooths creases and reduces odours between washes
- UV hygiene option uses light to help eliminate bacteria for added peace of mind

The models shown in this Specification Guide (SG) may not be available in all markets and are subject to change at any time. Product specifications may vary from those shown. This SG should not be used as installation guidance for any product. Further information is required to safely and correctly install the products featured here. Specific installation guidance will be available with the product on delivery and on our website haier.com

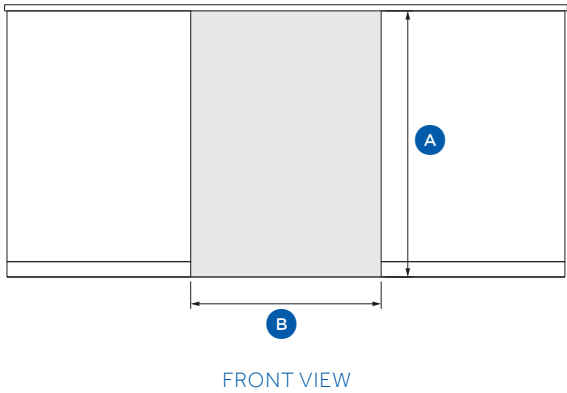
Product Overview

PRODUCT DIMENSIONS



	mm
A Overall height	850 - 865
B Overall width	595
C Overall depth (door closed)	678
D Overall depth (door open)	1169
E Overall depth (excluding door)	658

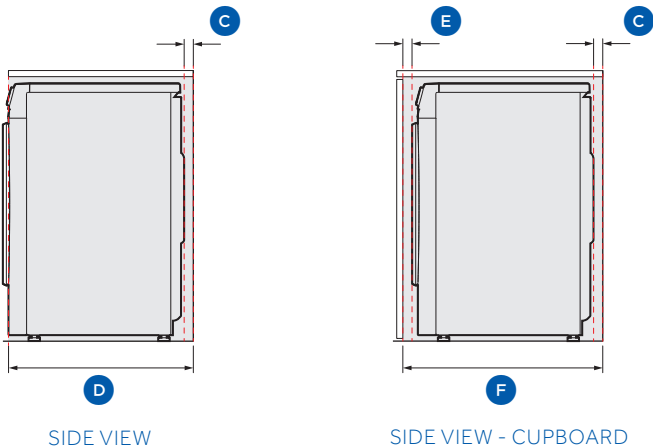
CAVITY DIMENSIONS



	mm
A Minimum height of cavity	865
B Minimum width of cavity	625
C Minimum clearance at back of cavity	30
D Minimum depth of cavity (excluding product door)	688
E Minimum clearance at front of cavity for in cupboard	30
F Minimum depth of cavity in cupboard	738

Note: If installing behind a cabinetry door, it must be hinged on the same side as the washing machine. There must be a minimum clearance of 30mm from the front of the washing machine door to the internal face of the cabinetry door for the product to operate safely.

The enclosed space must be provided with sufficient ventilation to meet local building code requirements or the door must be open while the product is operating.



SERVICES

- Supply 220-240 V, 50 Hz
- Service 10 A
- Connection Flex cord with plug